



# THE IPSWICH - FIRST FLOOR

1,986 1ST FLOOR S.F.

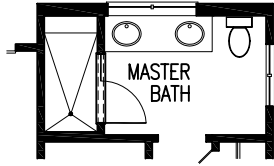
630 2ND FLOOR S.F.

2,616 TOTAL S.F.

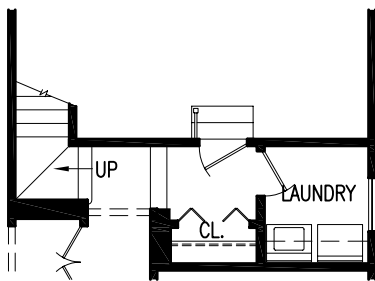
415 BONUS AREA S.F.

3,031 TOTAL S.F. W/BONUS AREA\*

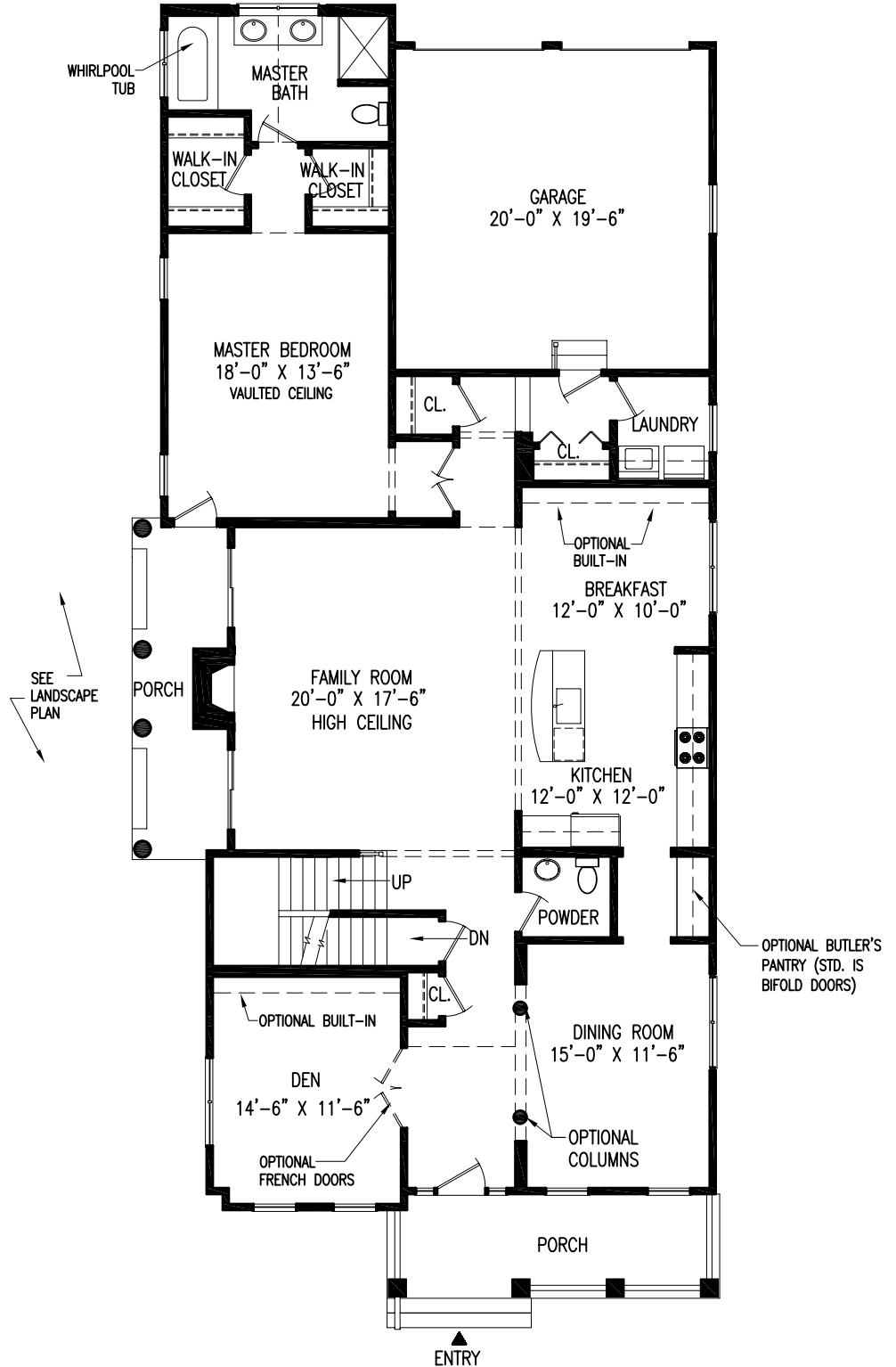
\*DOES NOT INCLUDE LOWER LEVEL



OPTIONAL 6' TILE SHOWER



STAIR WITH OPTIONAL BONUS ROOM ABOVE



SEE LANDSCAPE PLAN

Square footage shown is calculated based on the American National Standard for Single-Family Residential Buildings (ANSI Z765-1996). Square footage to be recorded on the Master Deed and Unit Deed differs to reflect Massachusetts protocols used to calculate condominium square footage. These Documents are used, among other things, for the purpose of determining ownership in the condominium trust. Refer to the Condominium Documents for further information.

# THE IPSWICH - SECOND FLOOR

1,986 1ST FLOOR S.F.

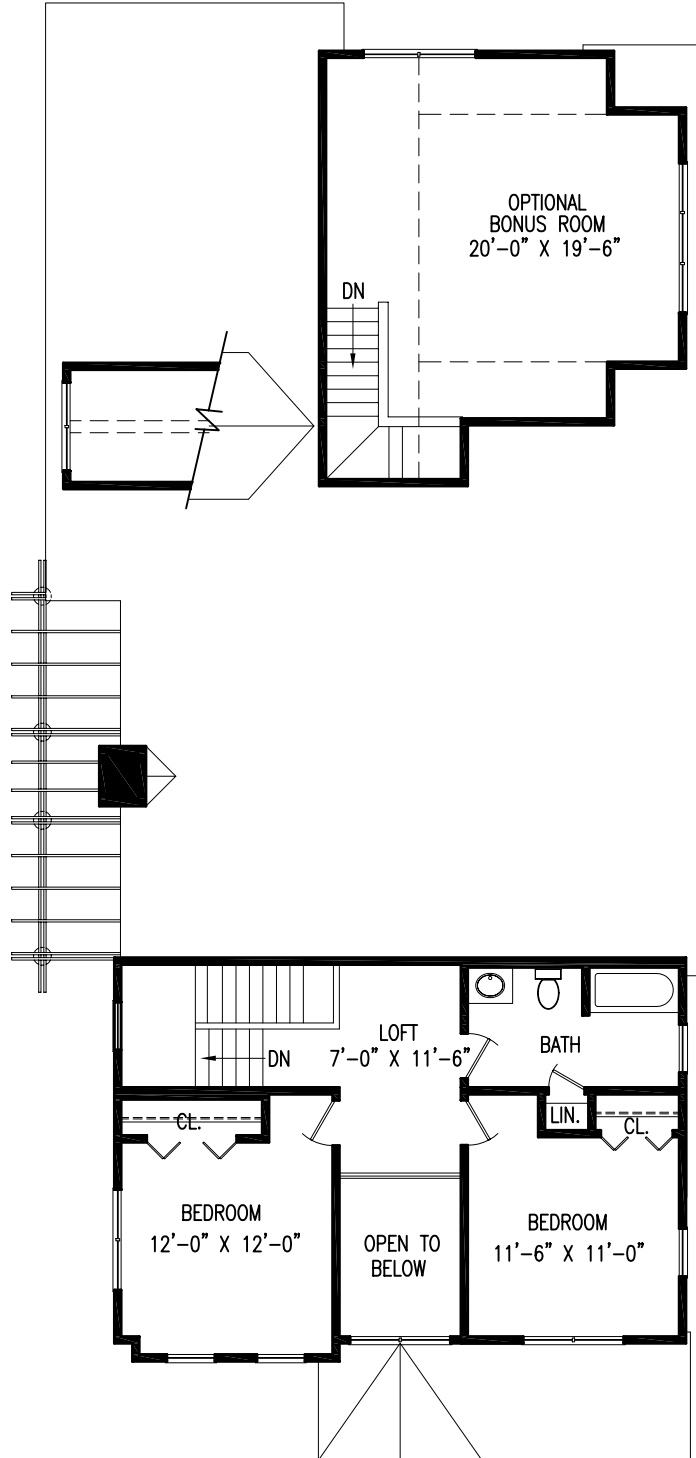
630 2ND FLOOR S.F.

2,616 TOTAL S.F.

415 BONUS AREA S.F.

3,031 TOTAL S.F. W/BONUS AREA\*

\*DOES NOT INCLUDE LOWER LEVEL

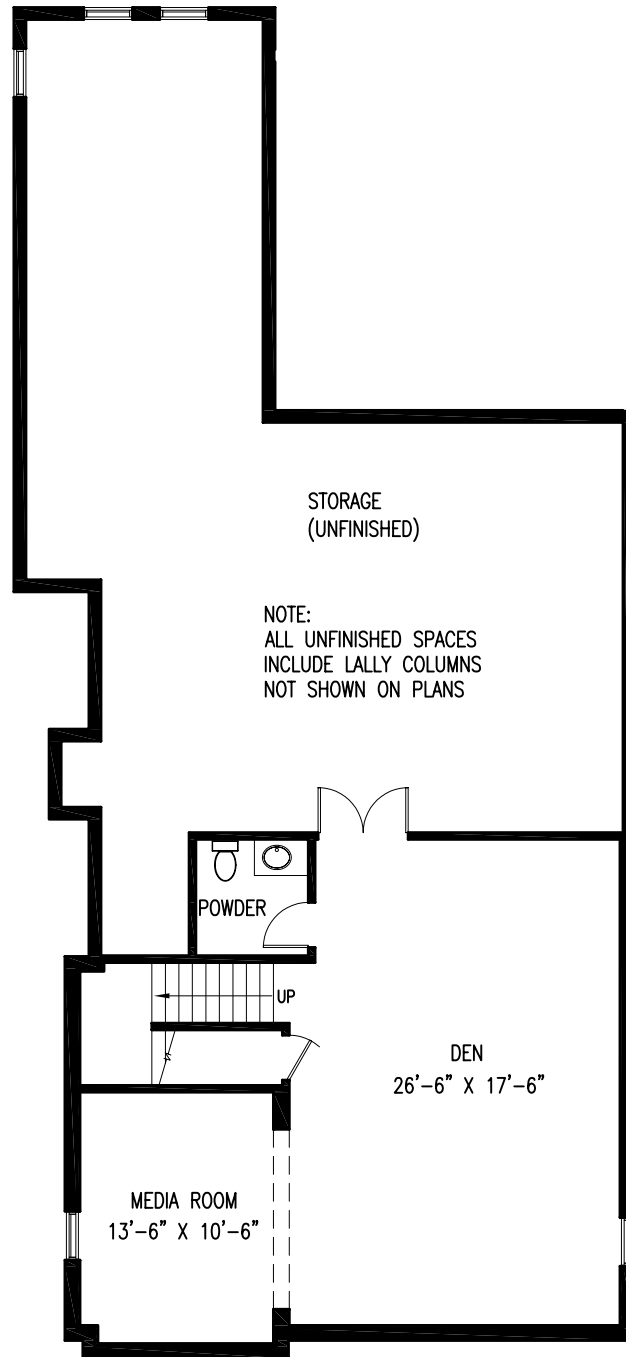


Square footage shown is calculated based on the American National Standard for Single-Family Residential Buildings (ANSI Z765-1996). Square footage to be recorded on the Master Deed and Unit Deed differs to reflect Massachusetts protocols used to calculate condominium square footage. These Documents are used, among other things, for the purpose of determining ownership in the condominium trust. Refer to the Condominium Documents for further information.

2/11/08-L

# THE IPSWICH - LOWER LEVEL OPTIONAL FLOOR PLAN ADDITION

804 S.F. (FINISHED SPACE)



Square footage shown is calculated based on the American National Standard for Single-Family Residential Buildings (ANSI Z765-1996). Square footage to be recorded on the Master Deed and Unit Deed differs to reflect Massachusetts protocols used to calculate condominium square footage. These Documents are used, among other things, for the purpose of determining ownership in the condominium trust. Refer to the Condominium Documents for further information.