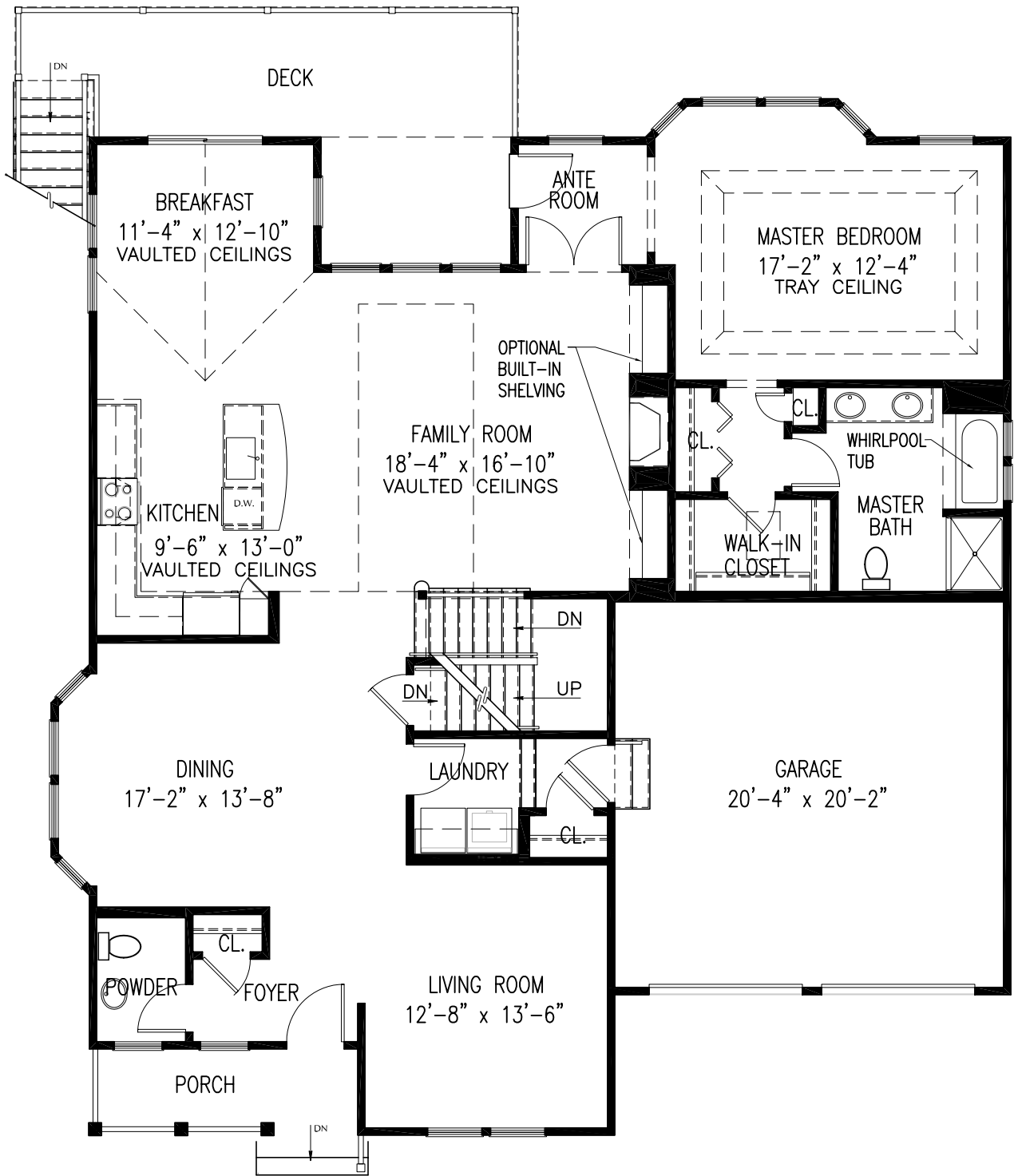


Red Mill Village



The Jordan
2,523 square feet



FIRST FLOOR (1,840 SQUARE FEET)

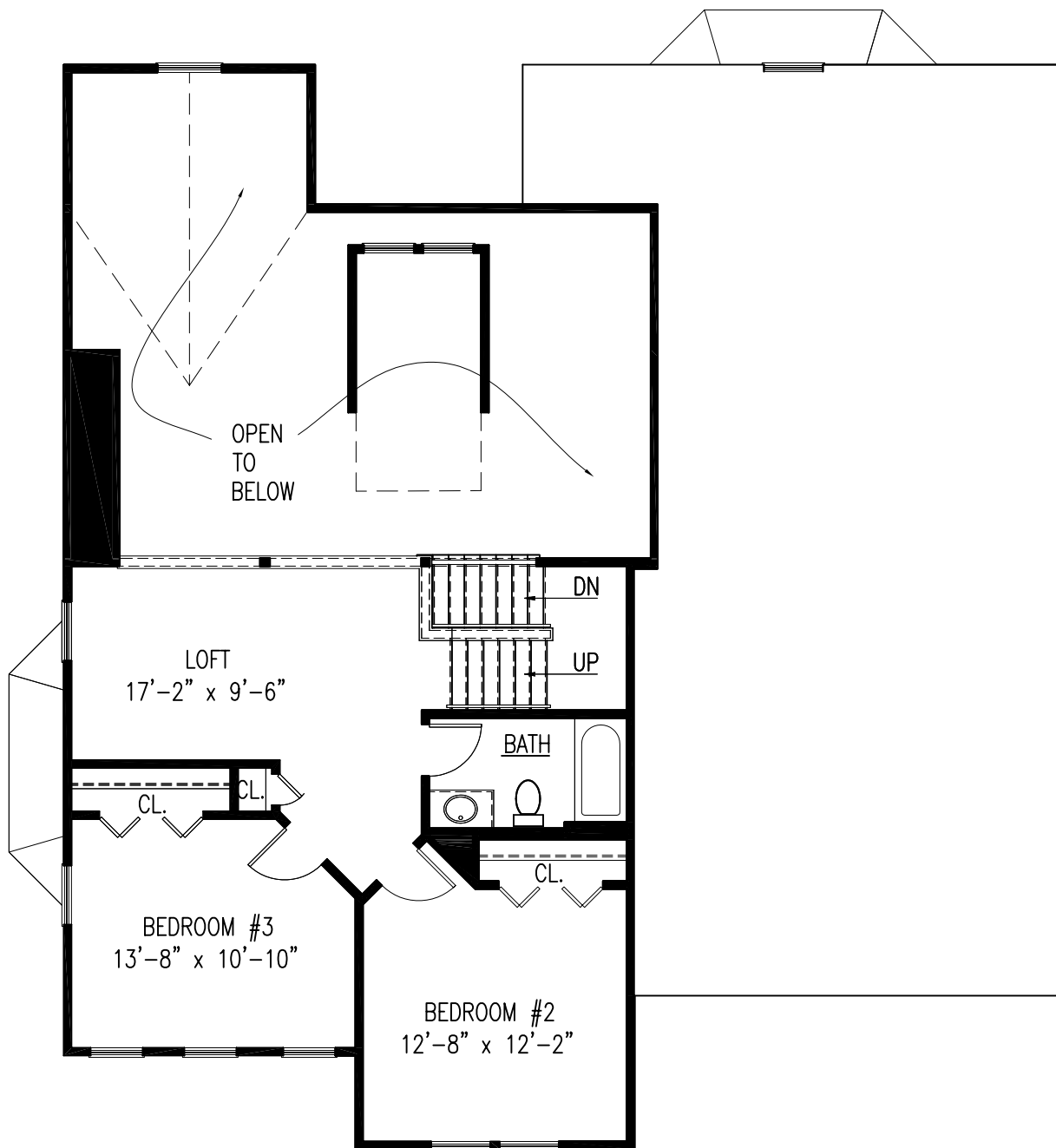
THE JORDAN I

1,840 1st FLOOR S.F.

716 2nd FLOOR S.F.

2,556 TOTAL S.F.

Square footage shown is calculated based on the American National Standard for Single-Family Residential Buildings (ANSI Z765-1996). Square footage to be recorded on the Master Deed and Unit Deed differs to reflect Massachusetts protocols used to calculate condominium square footage. These Documents are used, among other things, for the purpose of determining ownership in the condominium trust. Refer to the Condominium Documents for further information.



SECOND FLOOR (716 SQUARE FEET)

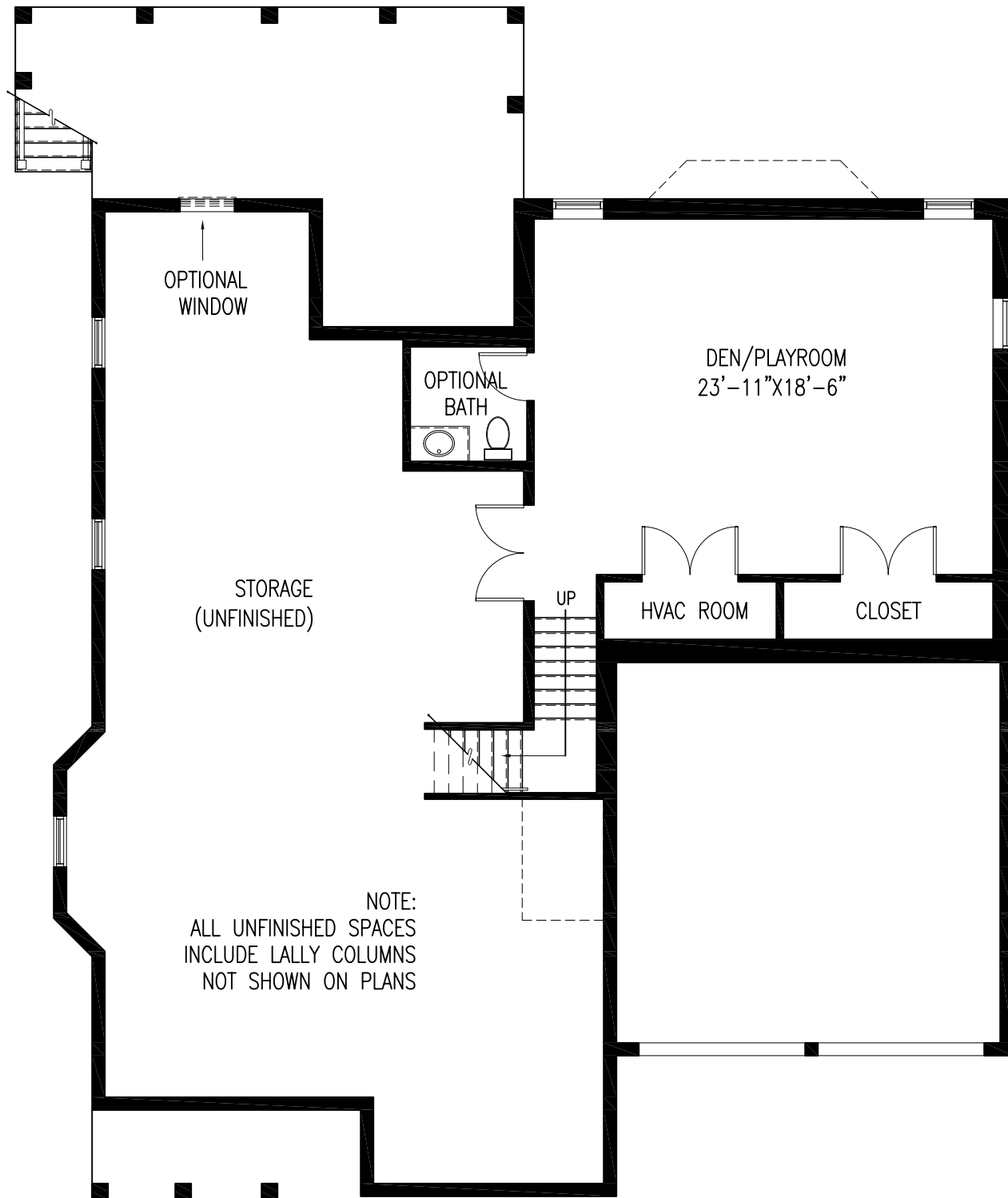
THE JORDAN I

1,840 1st FLOOR S.F.

716 2nd FLOOR S.F.

2,556 TOTAL S.F.

Square footage shown is calculated based on the American National Standard for Single-Family Residential Buildings (ANSI Z765-1996). Square footage to be recorded on the Master Deed and Unit Deed differs to reflect Massachusetts protocols used to calculate condominium square footage. These Documents are used, among other things, for the purpose of determining ownership in the condominium trust. Refer to the Condominium Documents for further information.



OPTIONAL FLOOR PLAN ADDITION PARTIALLY FINISHED LOWER LEVEL

THE JORDAN I OR II

722 SQUARE FEET
(FINISHED SPACE)

Square footage shown is calculated based on the American National Standard for Single-Family Residential Buildings (ANSI Z765-1996). Square footage to be recorded on the Master Deed and Unit Deed differs to reflect Massachusetts protocols used to calculate condominium square footage. These Documents are used, among other things, for the purpose of determining ownership in the condominium trust. Refer to the Condominium Documents for further information.