

Red Mill Village

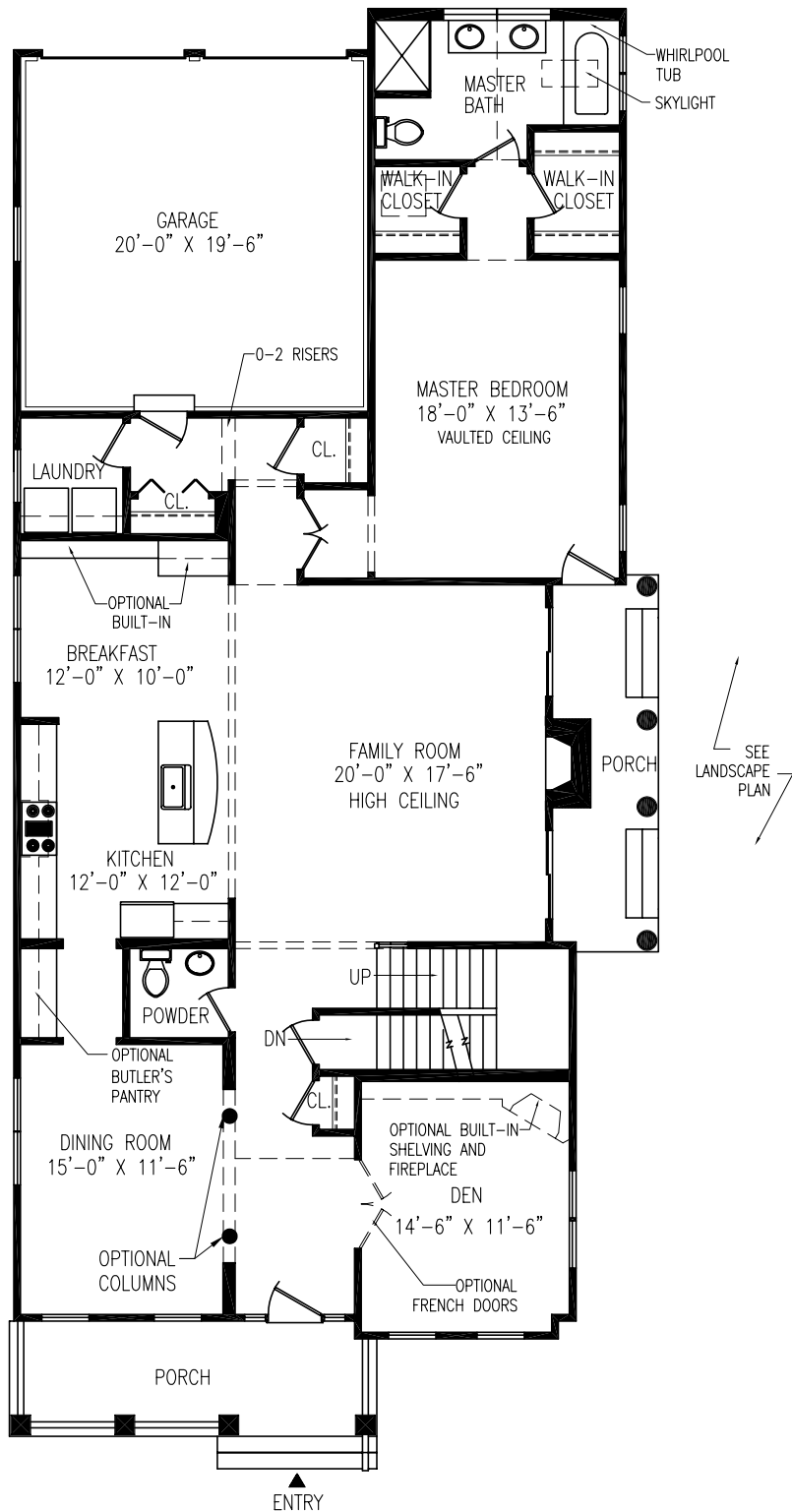


The Ipswich

2,616 square feet

11-24-04

I-R These floor plans are illustrative only, and all dimensions are approximate. Builder reserves the right to make minor modifications.



FIRST FLOOR (1,986 SQUARE FEET)

THE IPSWICH

1,986 1st FLOOR S.F.

630 2nd FLOOR S.F.

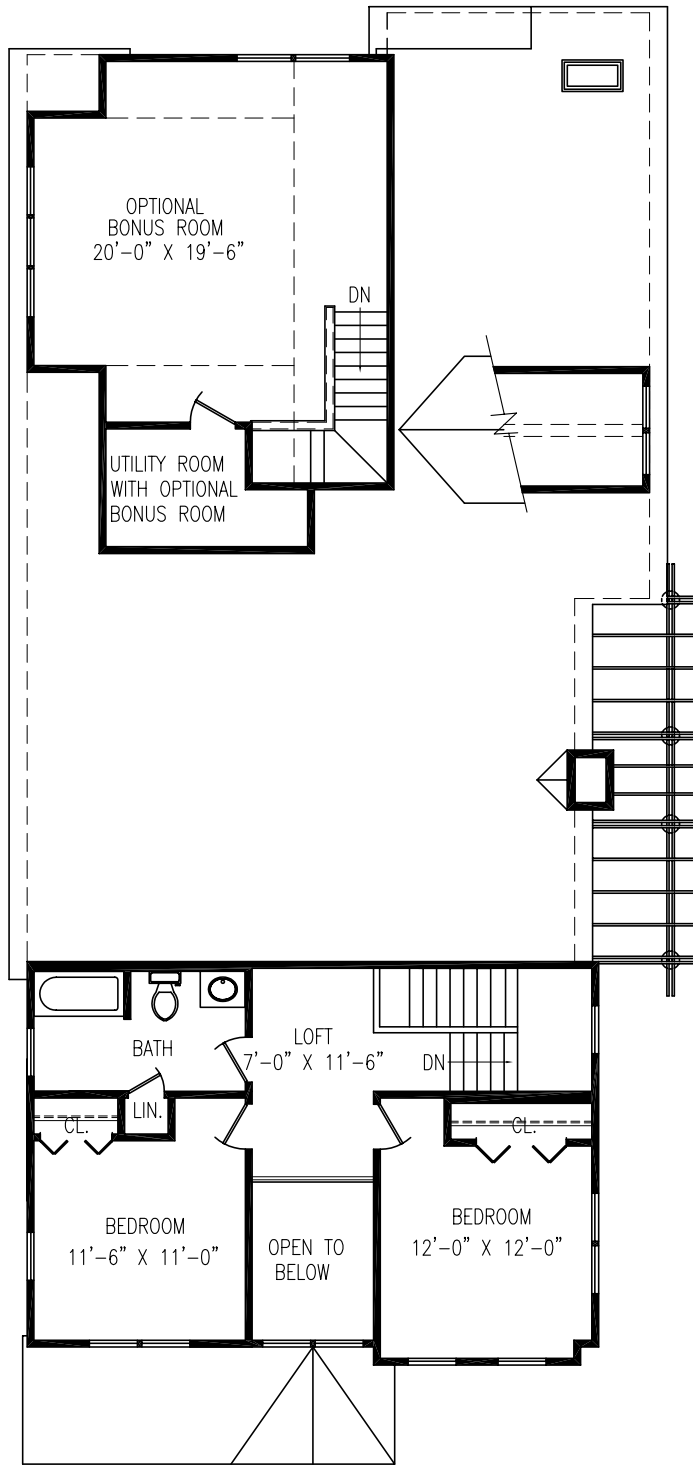
2,616 TOTAL S.F.

415 BONUS AREA S.F.

3,031 TOTAL S.F. W/BONUS AREA*

* DOES NOT INCLUDE OPTIONAL PARTIALLY FINISHED LOWER LEVEL

Square footage shown is calculated based on the American National Standard for Single-Family Residential Buildings (ANSI Z765-1996). Square footage to be recorded on the Master Deed and Unit Deed differs to reflect Massachusetts protocols used to calculate condominium square footage. These Documents are used, among other things, for the purpose of determining ownership in the condominium trust. Refer to the Condominium Documents for further information.



NOTE: AREA OF OPTIONAL BONUS ROOM AND UTILITY ROOM IS 415 SQ. FT.

SECOND FLOOR (630 SQUARE FEET)

THE IPSWICH

1,986 1st FLOOR S.F.

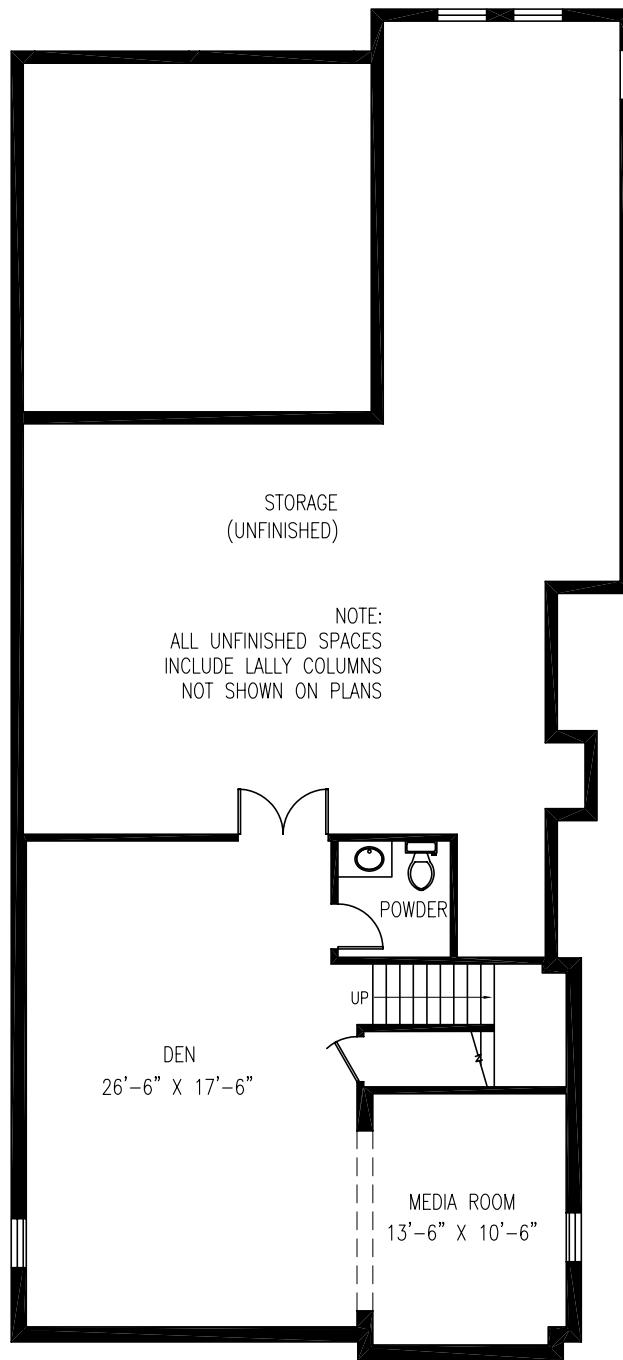
630 2nd FLOOR S.F.

2,616 TOTAL S.F.

415 BONUS AREA S.F.

3,031 TOTAL S.F. W/BONUS AREA

Square footage shown is calculated based on the American National Standard for Single-Family Residential Buildings (ANSI Z765-1996). Square footage to be recorded on the Master Deed and Unit Deed differs to reflect Massachusetts protocols used to calculate condominium square footage. These Documents are used, among other things, for the purpose of determining ownership in the condominium trust. Refer to the Condominium Documents for further information.



OPTIONAL FLOOR PLAN ADDITION PARTIALLY FINISHED LOWER LEVEL THE IPSWICH

804 SQUARE FEET
(FINISHED SPACE)

Square footage shown is calculated based on the American National Standard for Single-Family Residential Buildings (ANSI Z765-1996). Square footage to be recorded on the Master Deed and Unit Deed differs to reflect Massachusetts protocols used to calculate condominium square footage. These Documents are used, among other things, for the purpose of determining ownership in the condominium trust. Refer to the Condominium Documents for further information.