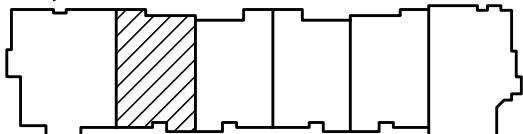


FIRST FLOOR (1,451 SQUARE FEET) THE EXPANDED ALDRICH

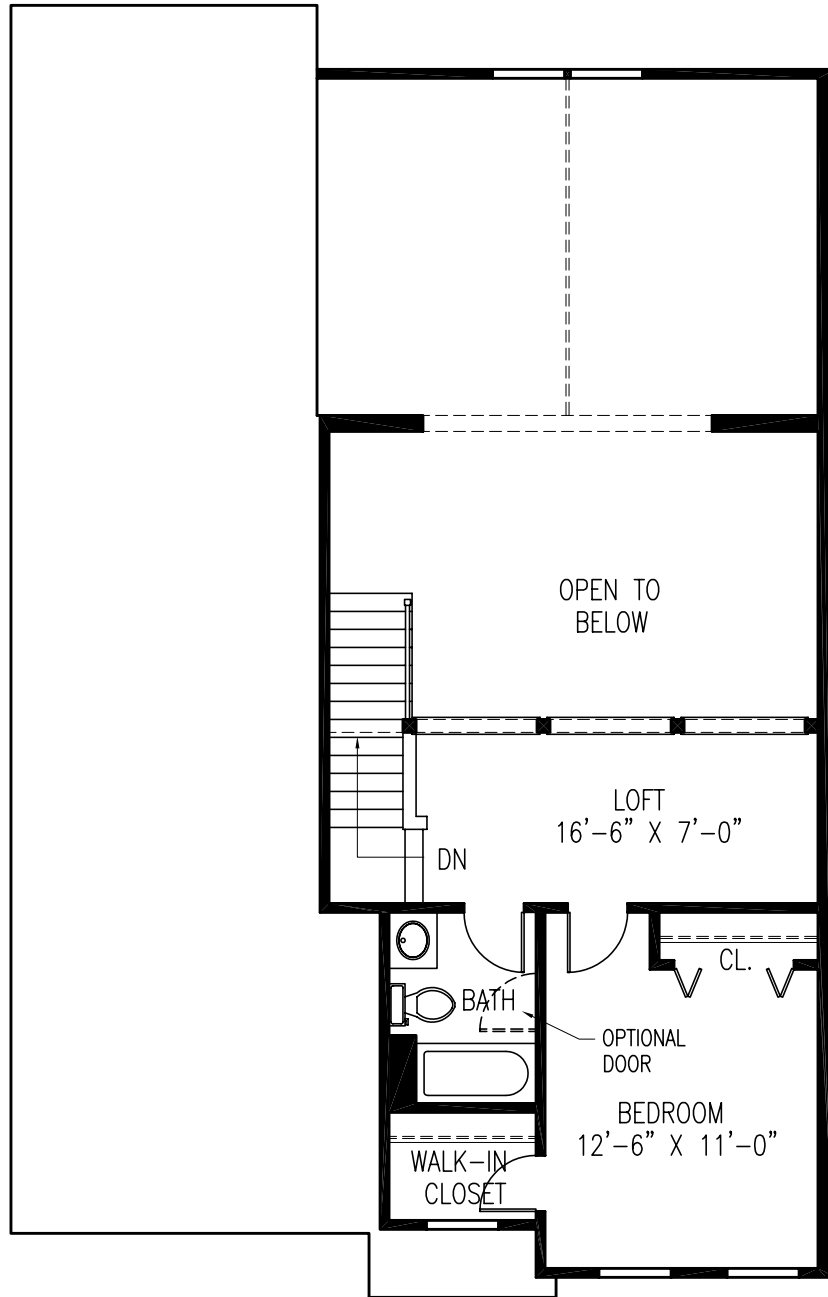
1,451 1st FLOOR S.F.

462 2nd FLOOR S.F.

1,913 TOTAL S.F.



Square footage shown is calculated based on the American National Standard for Single-Family Residential Buildings (ANSI Z765-1996). Square footage to be recorded on the Master Deed and Unit Deed differs to reflect Massachusetts protocols used to calculate condominium square footage. These Documents are used, among other things, for the purpose of determining ownership in the condominium trust. Refer to the Condominium Documents for further information.

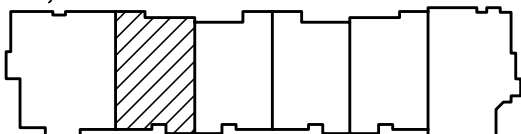


SECOND FLOOR (462 SQUARE FEET) THE EXPANDED ALDRICH

1,451 1st FLOOR S.F.

462 2nd FLOOR S.F.

1,913 TOTAL S.F.



Square footage shown is calculated based on the American National Standard for Single-Family Residential Buildings (ANSI Z765-1996). Square footage to be recorded on the Master Deed and Unit Deed differs to reflect Massachusetts protocols used to calculate condominium square footage. These Documents are used, among other things, for the purpose of determining ownership in the condominium trust. Refer to the Condominium Documents for further information.